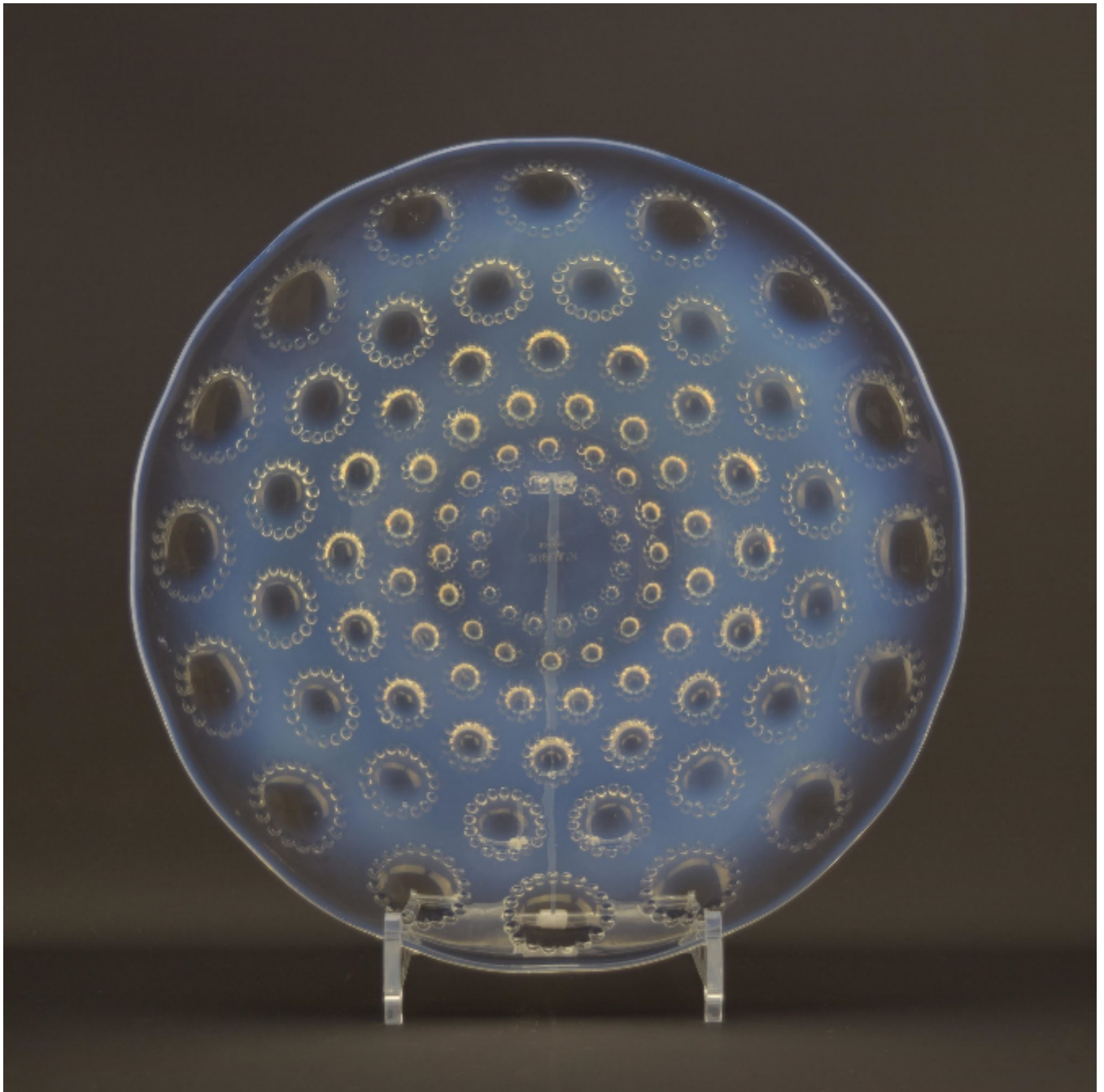


Rene Lalique opalescent Asters plate
Rene Lalique

Sold



REF: 2690

Width: 27.2 cm (10.7")

Description

Rene Lalique Asters opalescent plate No2

Marcilhac page ref 722

Model 10-3039

Introduced in 1935

The condition is very good, there are a few light surface scratches, nothing detrimental or off putting.

Stenciled mark to the centre R Lalique France