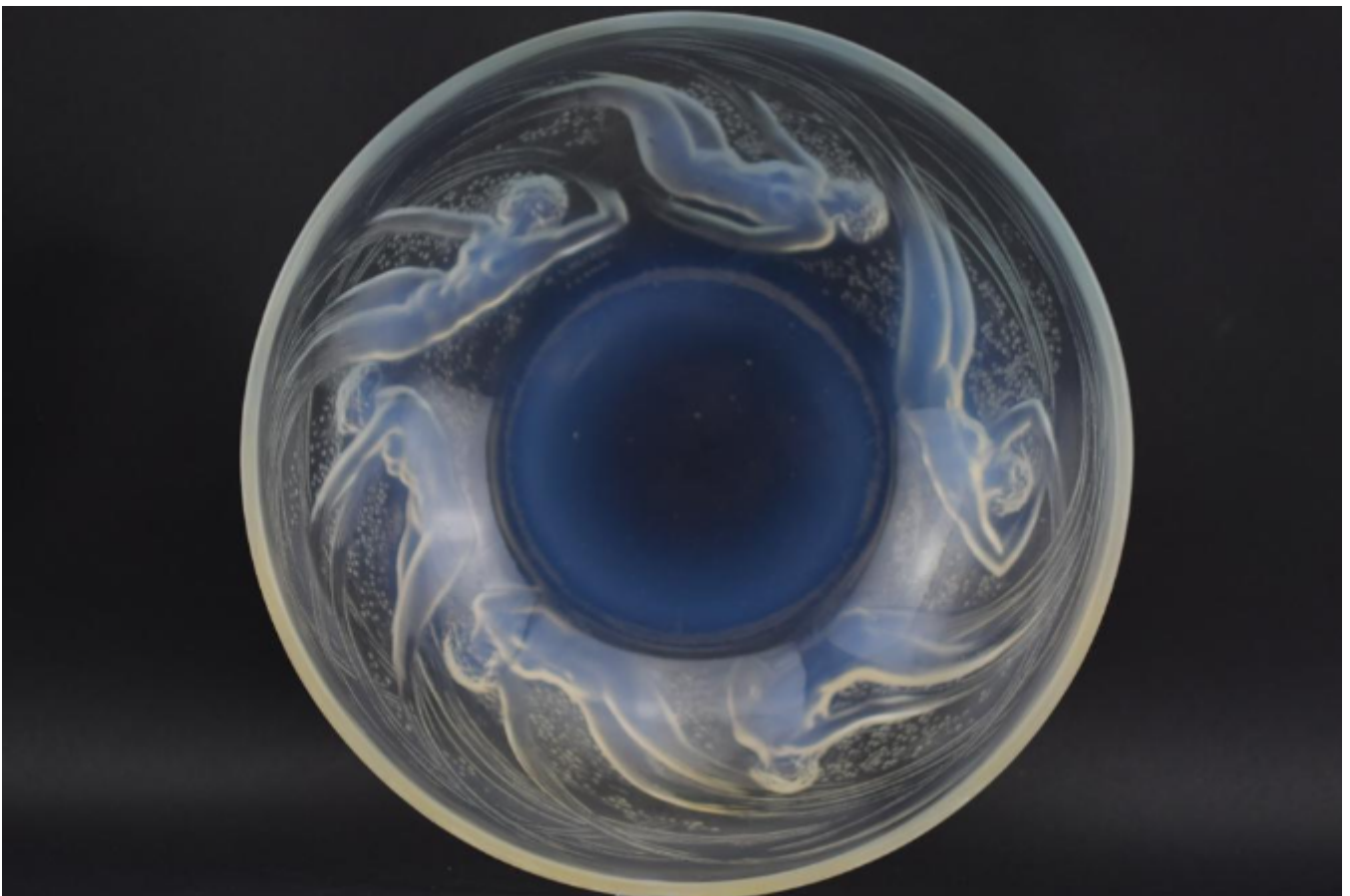


Rene Lalique opalescent Ondines glass bowl
Rene Lalique

Sold



REF: 1909

Height: 7.5 cm (3")

Diameter: 21 cm (8.3")

Description

R Lalique opalescent ondines bowl ouverte version

Introduced in 1921

Marcilhac page ref: 292

Wheel Cut mark - R Lalique france

Model number 380

The condition is very good with no damage or faults, there are a few age related light surface scratches, nothing detrimental.